

## **\$425,000 - 13543 139 Street, Edmonton**

MLS® #E4459684

**\$425,000**

4 Bedroom, 2.00 Bathroom, 1,214 sqft

Single Family on 0.00 Acres

Wellington, Edmonton, AB

Huge 69' wide lot with space for RV parking! This custom built bungalow features 2 kitchens plus a separate entrance to the basement. Over 1200 square feet of comfortable living space. Numerous upgrades over the years include: recently updated bright white kitchen with stainless steel appliances, renovated main floor bathroom, luxury vinyl plank flooring, newer windows and newer shingles. There are 3 good sized bedrooms upstairs and a fireplace. The lower level offers a large newer 2nd kitchen, 2nd living room, another brick-faced fireplace and a 4th bedroom with larger window. There is another full bathroom that has been renovated. The lower level also offers common laundry area. Situated on a huge yard that has an easement, cinder block oversized double garage and back lane access. Prime location on a quiet street just a few houses down from Albert G Nickel playground. Walking distance to the movie theatre, shopping on 137 ave and restaurants. Sir John Thompson Jr High is also close.

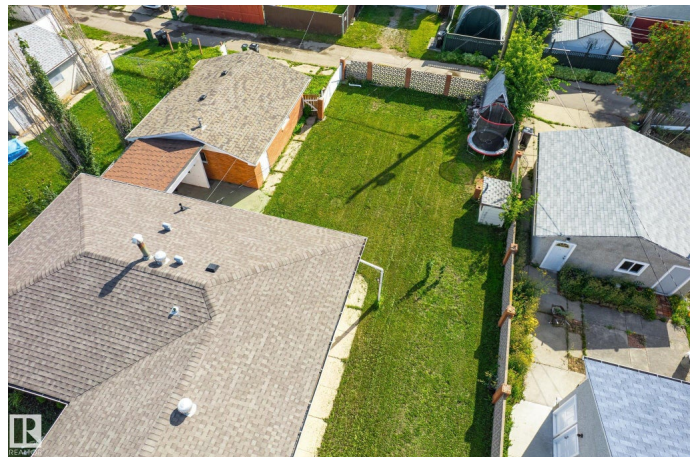
Built in 1958

### **Essential Information**

MLS® # E4459684

Price \$425,000

Lease Rate \$21



Bedrooms	4
Bathrooms	2.00
Full Baths	2
Square Footage	1,214
Acres	0.00
Year Built	1958
Type	Single Family
Sub-Type	Detached Single Family
Style	Bungalow
Status	Active

### Community Information

Address	13543 139 Street
Area	Edmonton
Subdivision	Wellington
City	Edmonton
County	ALBERTA
Province	AB
Postal Code	T5L 2C5

### Amenities

Amenities	Off Street Parking, Parking-Extra, R.V. Storage, Storage-In-Suite, Vinyl Windows
Parking	Double Garage Detached, Over Sized, RV Parking

### Interior

Appliances	Dryer, Garage Control, Garage Opener, Stove-Electric, Washer, Refrigerators-Two
Heating	Forced Air-1, Natural Gas
Fireplace	Yes
Fireplaces	Brick Facing
Stories	2
Has Suite	Yes
Has Basement	Yes
Basement	Full, Finished

### Exterior

Exterior	Wood, Brick
Exterior Features	Back Lane, Fenced, Flat Site, Playground Nearby, Public Transportation,

	Schools, Shopping Nearby
Roof	Asphalt Shingles
Construction	Wood, Brick
Foundation	Concrete Perimeter

### **Additional Information**

Date Listed	September 26th, 2025
Days on Market	2
Zoning	Zone 01

DATA IS DEEMED RELIABLE BUT IS NOT GUARANTEED ACCURATE BY THE REALTORS® ASSOCIATION OF EDMONTON. COPYRIGHT 2025 BY THE REALTORS® ASSOCIATION OF EDMONTON. ALL RIGHTS RESERVED. Trademarks are owned or controlled by the Canadian Real Estate Association (CREA) and identify real estate professionals who are members of CREA (REALTOR®, REALTORS®) and/or the quality of services they provide (MLS®, Multiple Listing Service®)

Listing information last updated on September 28th, 2025 at 6:02pm MDT